

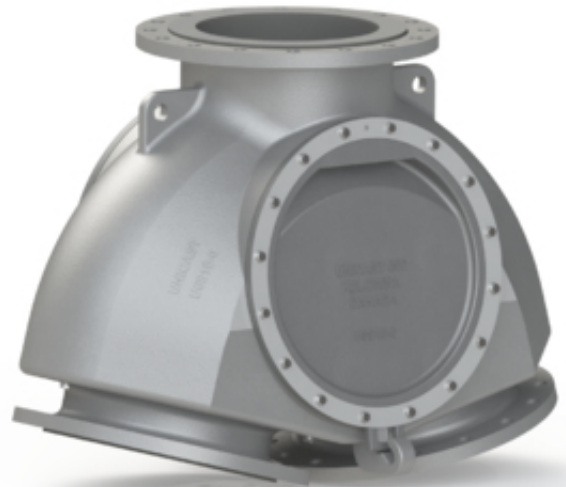
## **UniBall Three-Way Check Valves**

*Unicast's UniBall Three-Way Check Valve features two easily removable access doors and removable seats for hassle-free inline maintenance.*

---

### **UNIBALL 3-WAY CHECK VALVE (CONVERGING VALVE)**

The UniBall Valve is a Unicast innovation designed for the transport of slurry. What makes the UniBall unique are two easily removable access doors and removable seats for hassle-free inline maintenance. Perform regular maintenance on the UniBall Converging Valve without removing it from the pipeline. You do not need a crane, hoist, or lift. You do not need more than one person to do the job. And maintenance won't cost your plant thousands of dollars in downtime. Only the UniBall by Unicast offers hassle-free inline maintenance to save you money and time.



### **HOW DOES THE UNIBALL VALVE WORK?**

Both sides of the UniBall ball valve feature a large access panel. With the valve inline, unbolt the door and remove it. Reach in and unbolt the seats. Remove and replace the seats. Replace the access panel door and re-bolt. It's easy, quick, and a one-man job.

### **BUILT TO LAST**

The housing is cast in one-piece using the Unicast proprietary alloy D1 for

durability. Rubber coating on the housing, steel ball, and seats shield the valve and its parts from abrasive slurry.

## **FEATURES & BENEFITS**

- Why remove the valve from the pipeline when you don't have to? Switch to the Unicast UniBall for quick and easy inline maintenance.
- Use the same wrench to remove both the doors and seats!
- One-piece cast housing in D1
- Rubber coating on housing, ball, and seats = protective shield
- Longest wear life - built for maximum abrasion resistance
- Simple to operate, simple to maintain



Uniball Converting Valve